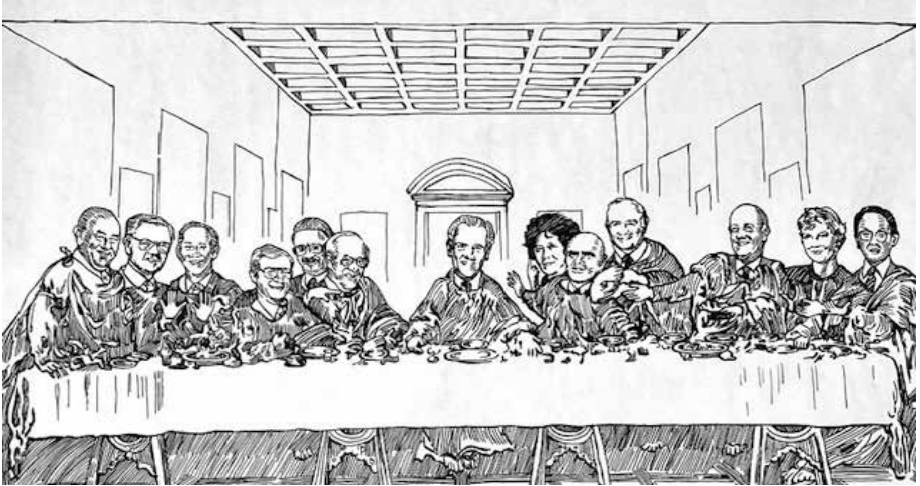


# Terry Flanigan Works of Art

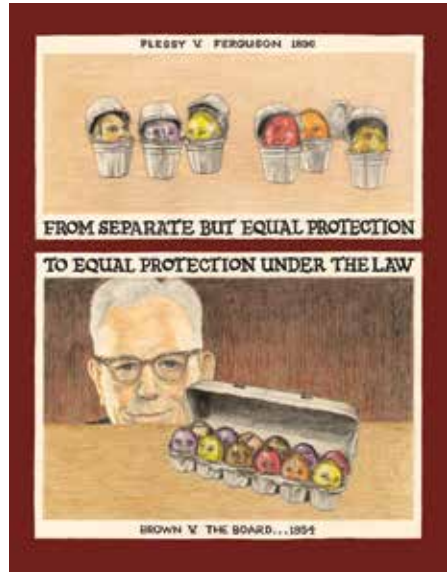


*When I agreed to do a caricature of Chief Justice Malcom Lucas for his retirement lunch, I was later contacted and asked if I wouldn't mind including images of all the justices with whom he had served during his tenure as Chief. Oh sure, no problem, right? What followed, based upon the numbers, was a natural setup for a parody on da Vinci's "Last Supper." Each participant was provided with a copy along with an explanation that their placement in the picture from Lucas's right arm outward and left arm outward was based upon tenure. More importantly, it clarified why Justice Ed Panelli found himself sitting behind the table as Judas Iscariot in the "Last Lunch." Following this placement formula, you will find justices, from Malcolm Lucas in the center leftward, Stanley Mosk, Allen Broussard, Edward Panelli, John Arguelles, David Eagelson, Marcus Kaufman; and from Lucas rightward, Joyce Kennard, Armand Arabian, Marvin Baxter, Ronald George, Kathryn Werdegart, Ming Chin.*

*-Terry Flanigan*



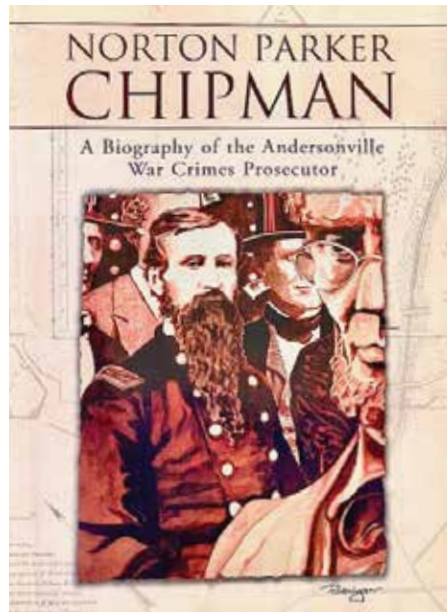
*Alameda Courthouse Prosecutors*



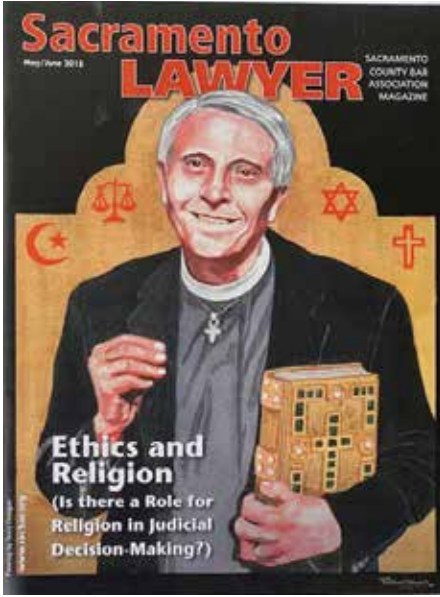
*Separate But Equal to Equal Protection Under The Law*



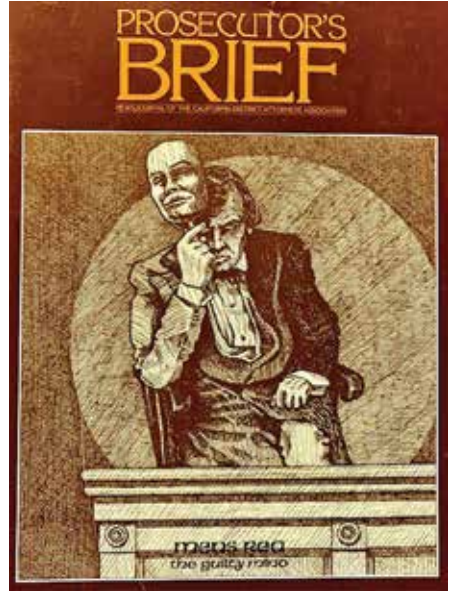
*'The Cinderella Justice'- California Supreme Court Justice Joyce Kennard*



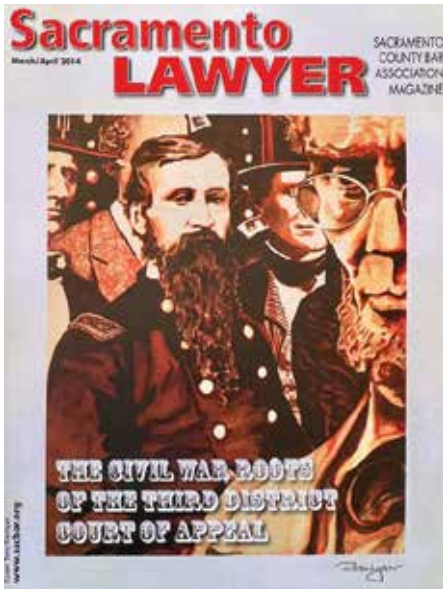
*Biography Cover of Norton Parker Chipman written by Jeffery Hogge*



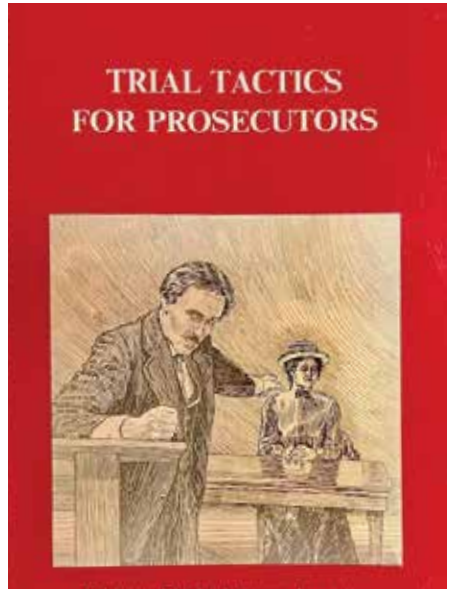
Father Rodney Davis, former Justice, Court of Appeal, Third Appellate District



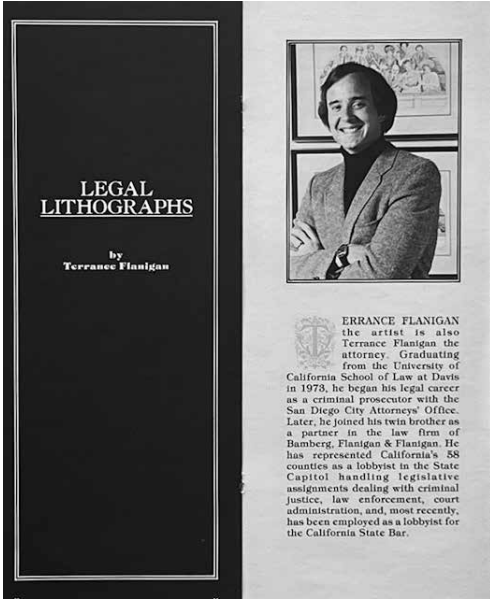
Men's Rea-The Guilty Mind



Norton Chipman-On the Stage with Lincoln



California DA Handbook



*Legal Lithographs Brochure 1978*



*Blind Justice*



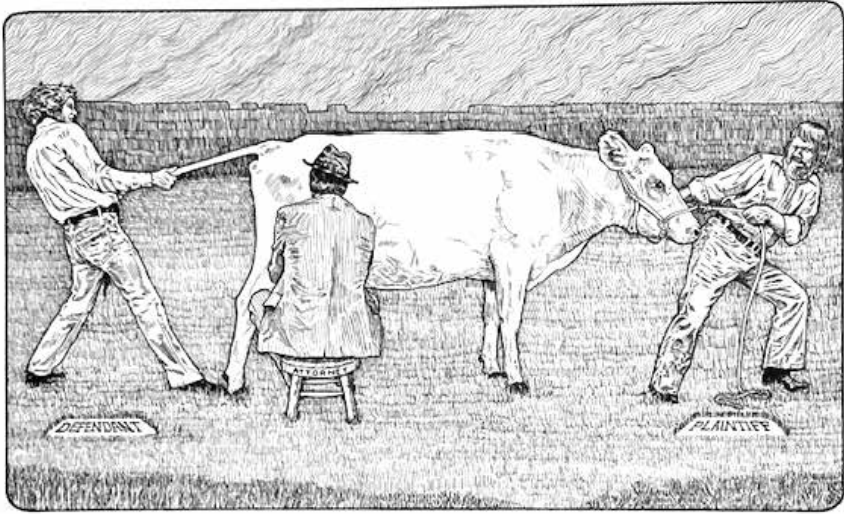
*The Legal Secretary A.M.-P.M.*



*Opening Statement*



*Closing Argument*



*The Litigant*

ILLUSTRATION BY JENNIFER KASABA, 1988

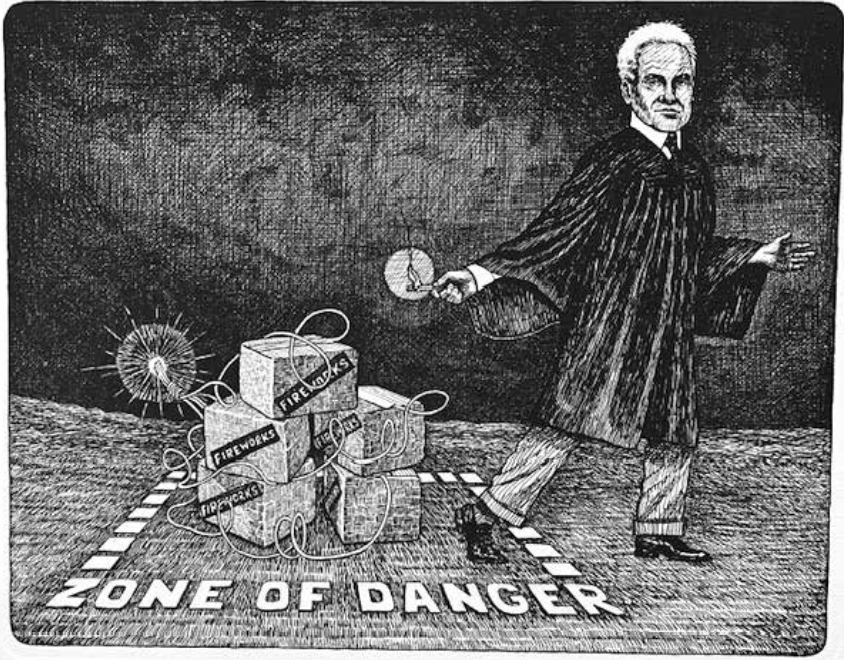
*The Law Suit*



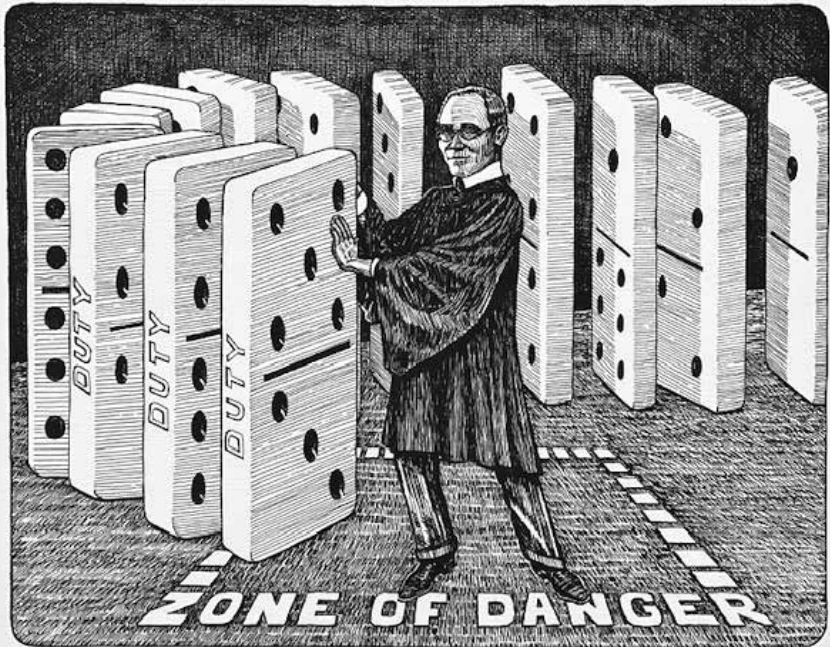
*Legal Passages*

ILLUSTRATION BY JENNIFER KASABA, 1988

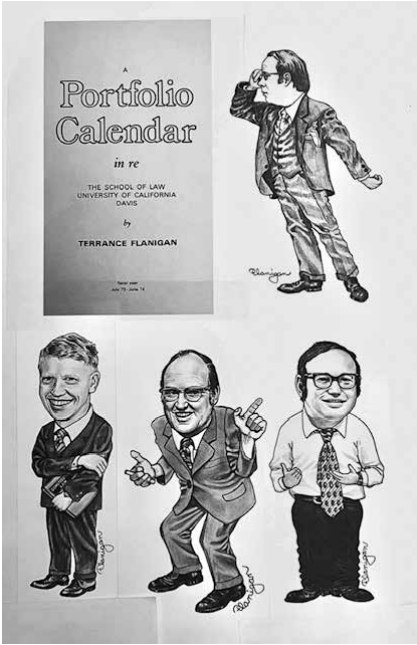
*Legal Passages*



*Cardoza's Proximate Cause*



*Andrews' Proximate Cause*



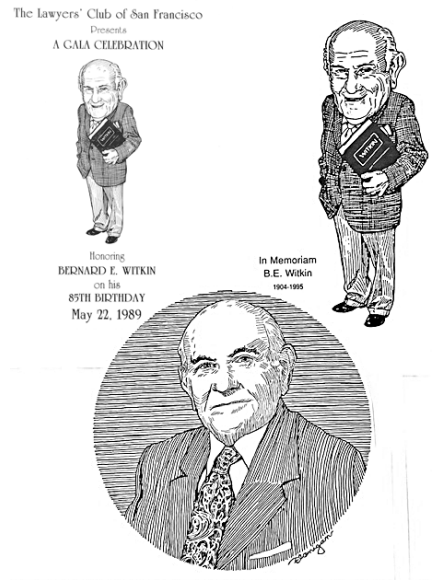
Top: Prof. Daniel Wm. Fessler.  
Bottom: Dean Edward Barrett, Prof. Dan Dykstra, Prof. Dov Grunschlag



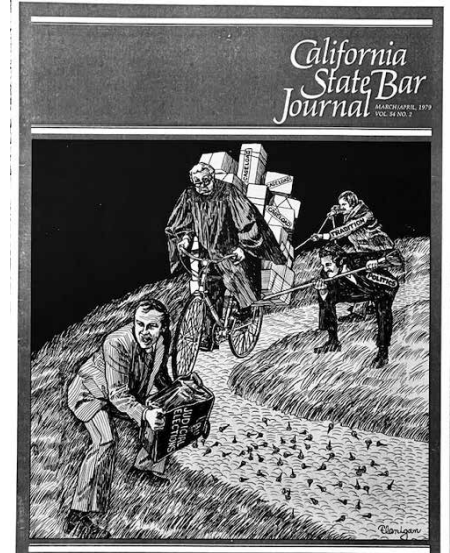
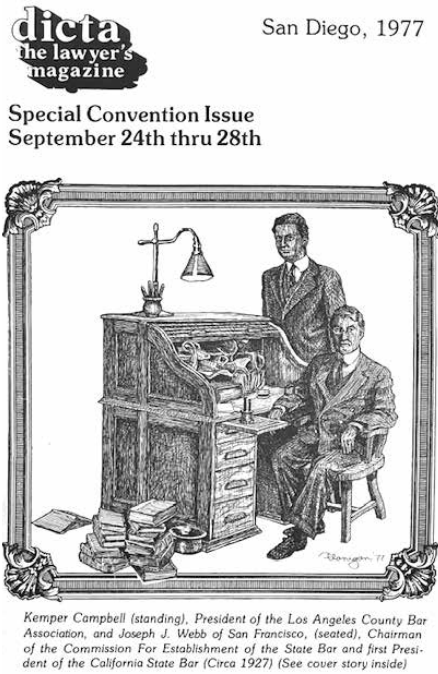
Professors Brigitte and Edgar Bodenheimer. Bottom: Prof. John Whelan



Top: Prof. John Poulos, Prof. Jack Ayer, Prof. Gary Goodpaster. Bottom: Prof. Harrison "Hap" Dunning, Prof. Richard Wydick, and, Prof. Jim Hogan



Bernie Witkin



Legal Magazine Covers

**RETIREMENT DINNER CARICATURES  
COURT OF APPEAL, THIRD APPELLATE DISTRICT**



*Arthur G. Scotland  
Associate Justice, 1989-1997,  
Presiding Justice, 1998-2010*



*Vance W. Raye  
Associate Justice, 1990-2010,  
Presiding Justice, 2011-2022*

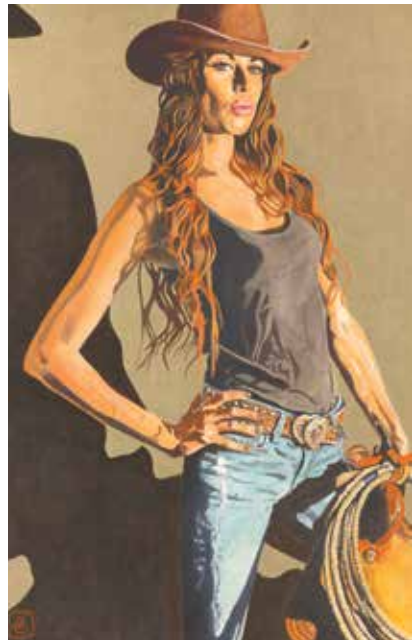


*George W. Nicholson  
Associate Justice, 1990-2018*

NON LEGAL ARTWORK



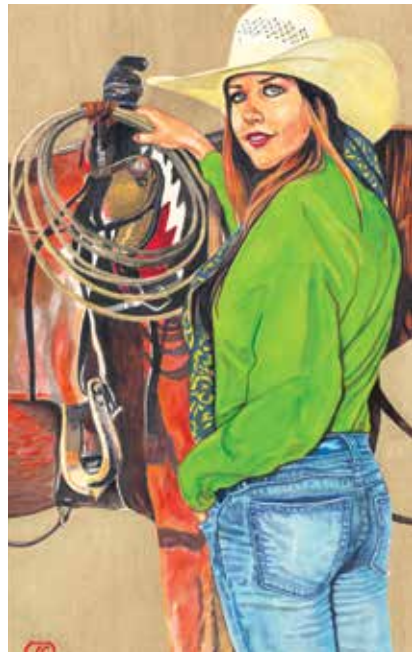
44-40



Saddle Up



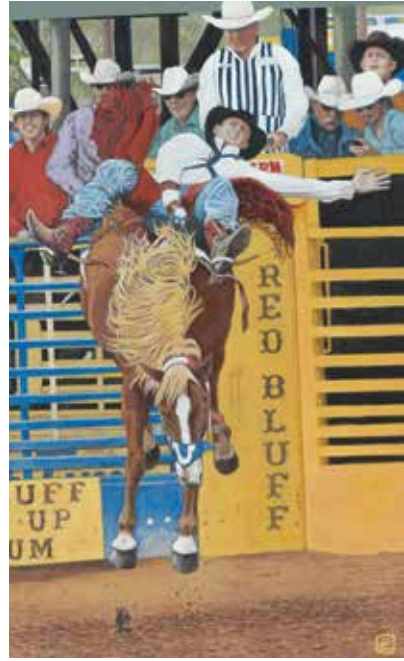
Chevy Rider



Bakersfield Cowgirl



*The Hatters*



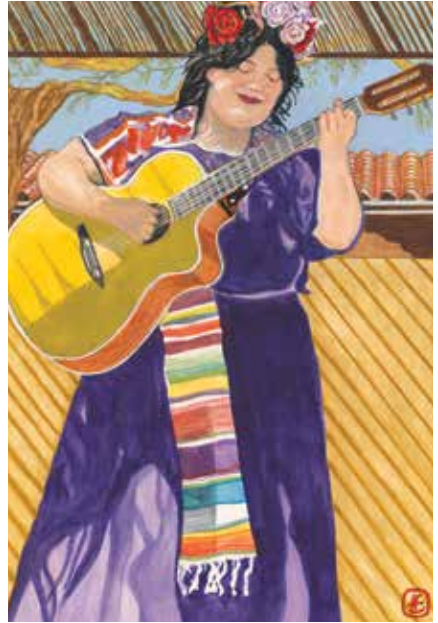
*Pegasus With Leather Wings*



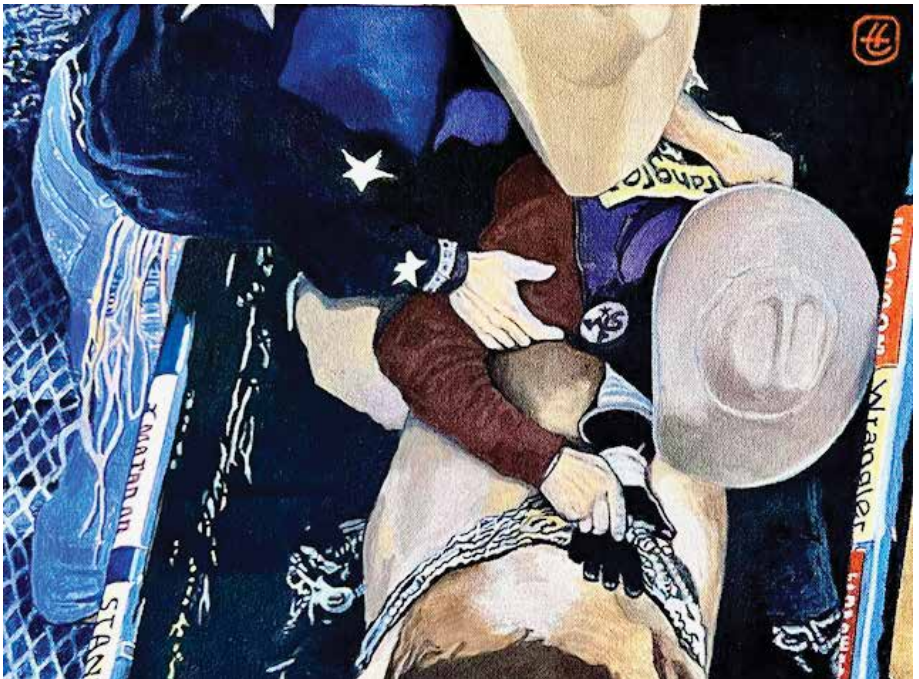
*The Pickup Man*



*Cowgirl, Clouds, And Chrome Hooves*



*Mariachi Music - Made In The shade*



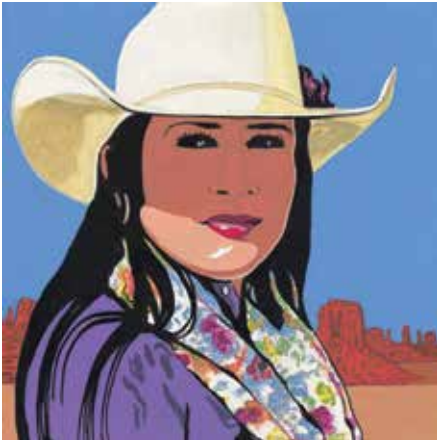
*Lead Pipe Cinch*



*Strings and Shadows*



*Moonlight Rider*



*Monument Valley Girl*



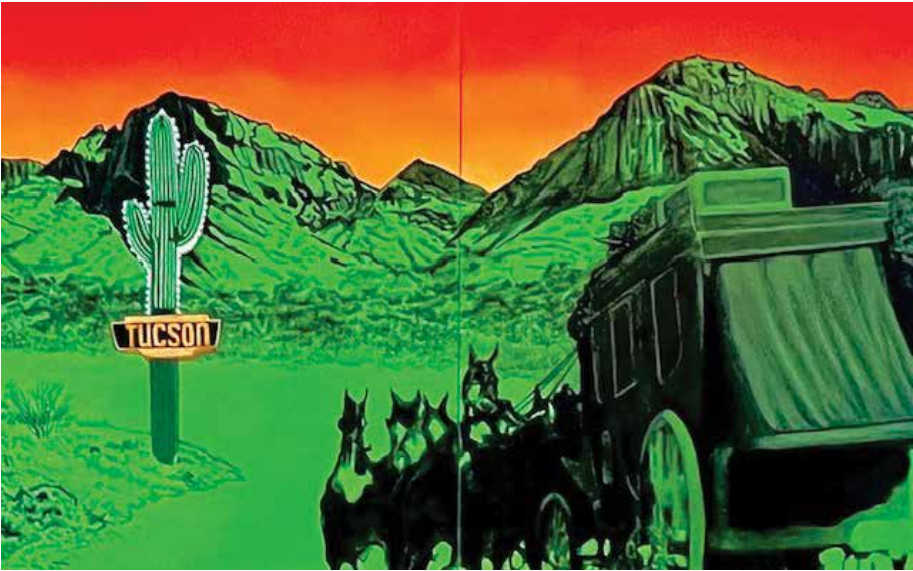
*Camera Cowgirl*



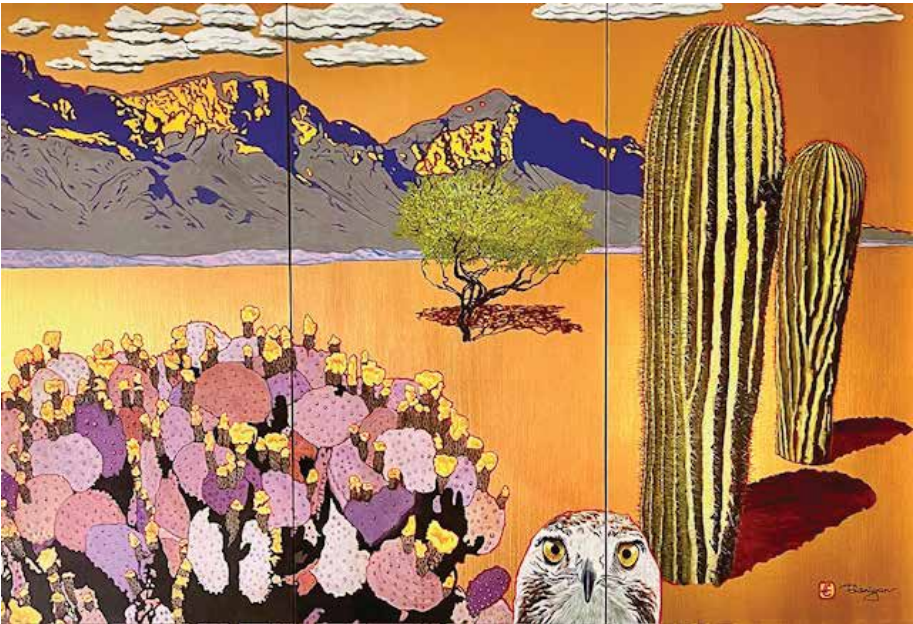
*Thunder and Rein*



*4th of July in Marysville*



*A Sign From The Future Along The Tucson Trail*



*Desert Japonisme*



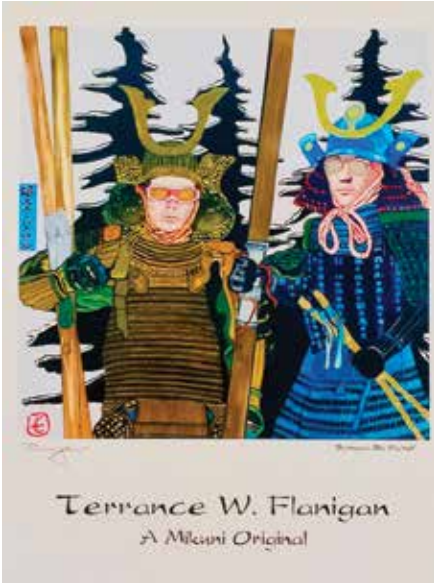
*Faith, Fear, And The Future?*



*Museo Nacional de Antropologia - Mexico City (acrylic)*



*Produced For the Mikuni Restaurant Group (Home Base: Sacramento, CA). Done in the style of Frank Miller's graphic novel and movie "Sin City". The model is Taro Aris, Chief Dreaming Official for Mikuni.*



*Samurai Ski Patrol*



*Samurai Mountain Biker*



*Mikuni Beauty #1*



*Mikuni Beauty #2*

## VICTORIA - A CHILDREN'S BOOK FOR ADULTS

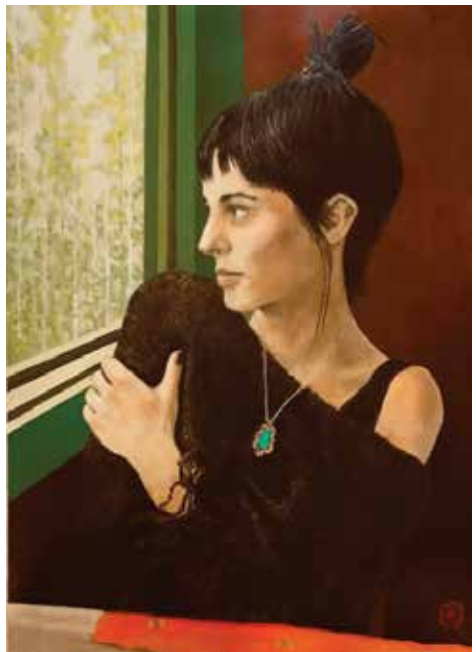
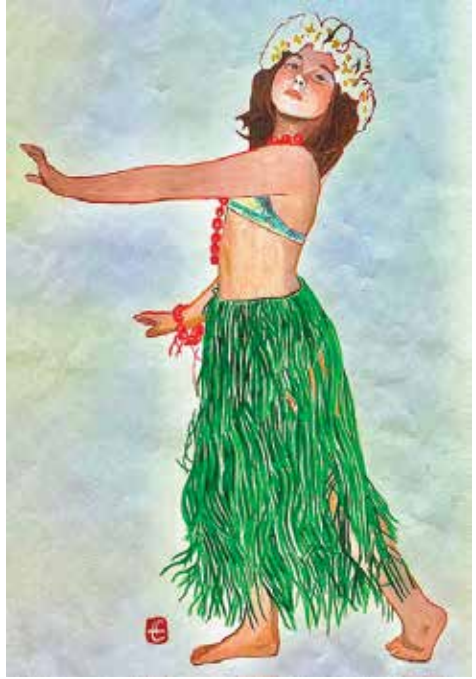


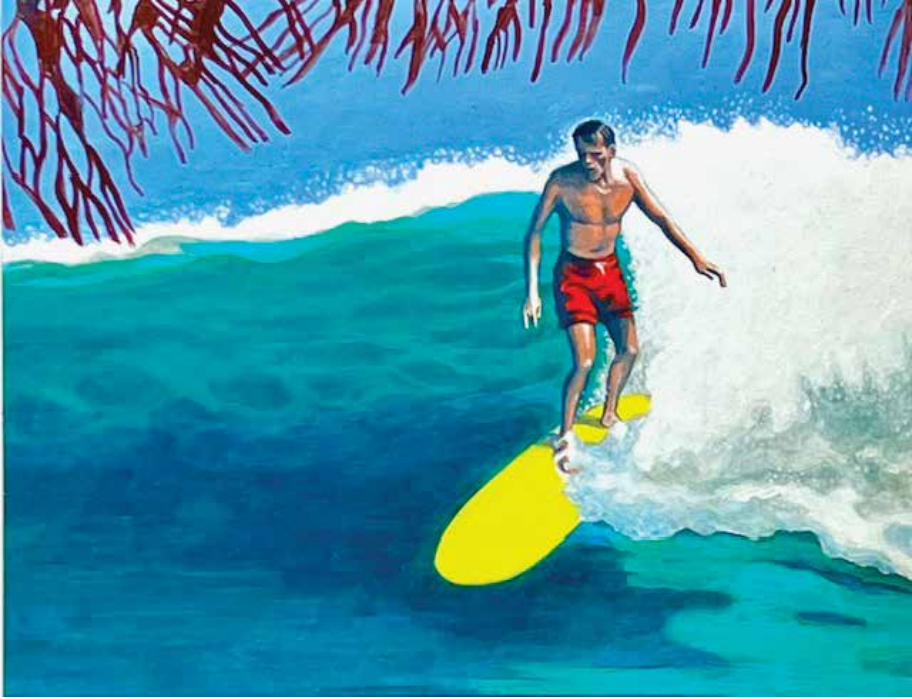
*...struggling to be the Home Of The Brave And The Land Of The Free*      *When does a house become a person?*



*When cars had fins and lots of chrome trim*

## THE STAGES OF MOLLY KATHERINE FLANIGAN





*WINDANSEA* La Jolla 1965



*One of First Oil Paintings* 1963



KOI #1



KOI #2



*Oh well, marooned in Honolulu again*



*Taking the Clipper to Paradise  
(model is Fiona Ma, 34th California  
State Treasurer)*



*Nagelesque #1*



*Nagelesque #2*